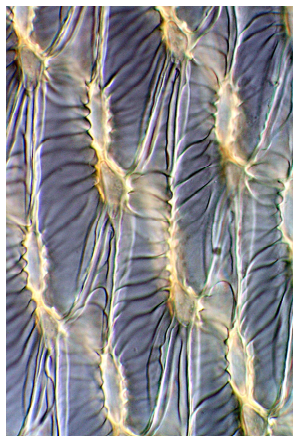
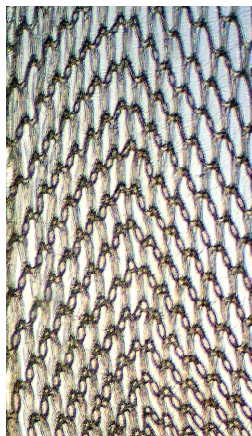
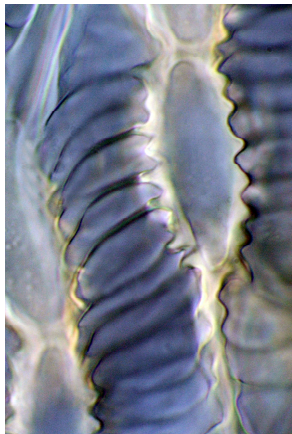


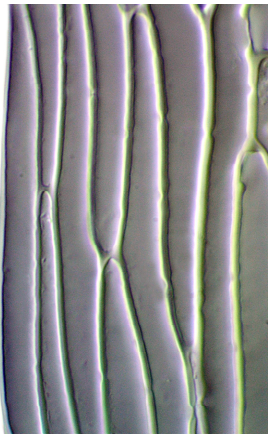
Ambuchanania leucobryoides (T.Yamag., Seppelt & Z.Iwats.)
Seppelt & H.A.Crum



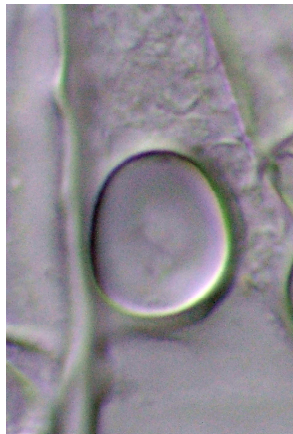
shoot (dry), leaf outline, leaf surface, and branch leaf cells
1 mm, 0.5 mm, 100 μ m, 50 μ m



branch leaf hyalocyst fibrils
50 μ m



linear border cells
10 μ m



hyalocyst pore
10 μ m