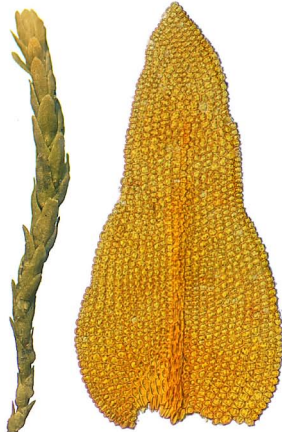
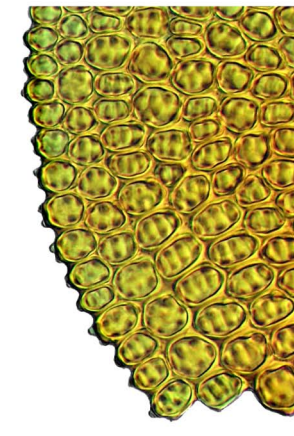
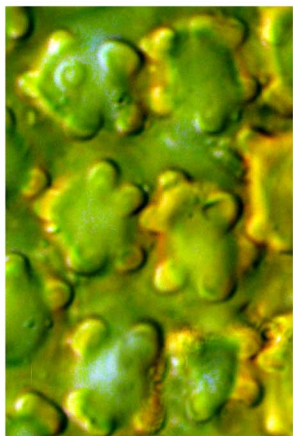
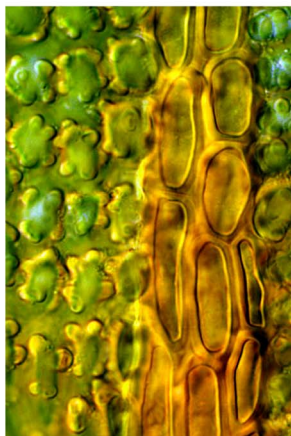


*Haplophymenium pseudotriste* (Müll.Hal.) Broth.



vegetative shoots (dry), leaf outline, and leaf apex  
1 mm, 1 mm, 0.1 mm, 10  $\mu$ m



costa midleaf  
10  $\mu$ m

leaf papillae  
10  $\mu$ m

leaf basal angle  
10  $\mu$ m