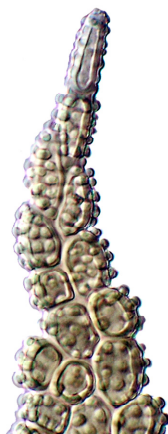
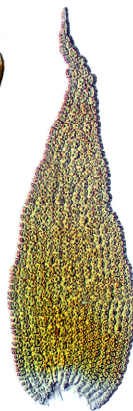
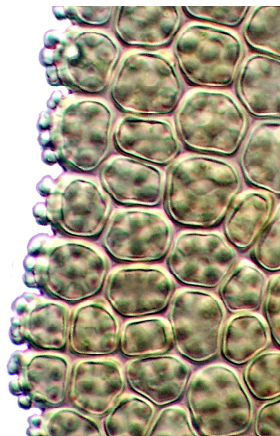


# *Erpodium glaucum* (Wilson) I.G.Stone



vegetative shoot, dorsilateral leaves, calyptra, capsule, and leaf outline and apex

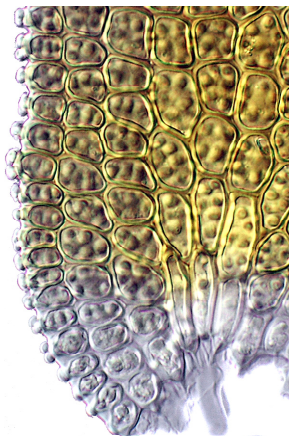
1 mm, 0.1 mm, 1 mm, 1 mm, 0.1 mm, 10  $\mu$ m



margin midleaf  
10  $\mu$ m



leaf cell papillae  
10  $\mu$ m



leaf basal angle  
10  $\mu$ m