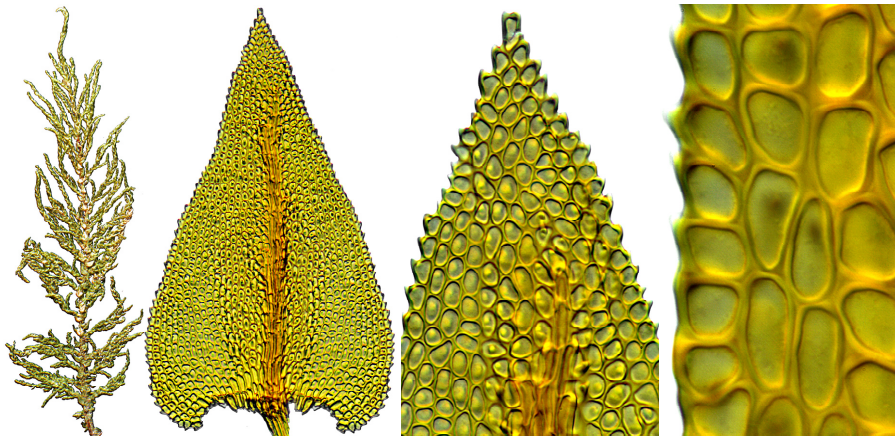
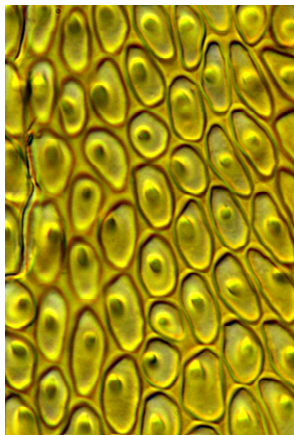


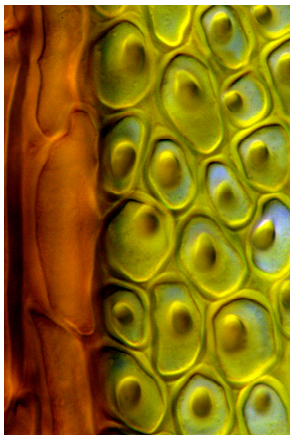
Thuidium cymbifolium (Dozy & Molke.) Dozy & Molke.



vegetative shoot (dry), branch leaf outline, branch leaf apex, and branch leaf margin
1 mm, 0.1 mm, 50 μm , 10 μm



branch leaf cells
10 μm



branch leaf costa
10 μm



branch leaf basal angle
50 μm