

Australian Network for Plant Conservation, Inc
presents a workshop on

REHABILITATION AND MANAGEMENT OF DISTURBED NATIVE VEGETATION

Coffs Harbour Wednesday 14 - Thursday 15 March 2007

Venue: Coffs Ex-Services Club, corner of Pacific Hwy & Vernon St, Coffs Harbour, NSW



Are you involved in the rehabilitation of native vegetation? Does your work-site include native vegetation that you need to manage or rehabilitate? Do you participate in local rehabilitation projects? Are you interested in reversing the decline of native plant communities in your area? Then this workshop is for you!

Workshop focus:

The knowledge and skills required to undertake ecological rehabilitation and management of disturbed native vegetation.

Themes include:

- The ecological principles essential to planning a rehabilitation project.
- Understanding the task (the goal for the site, planning, resources, assessing site and vegetation condition, issues such as soil health, provenance, impacts on coastal environments, monitoring and ongoing management, local issues).
- Applying ecological principles to rehabilitation projects (local case studies, site visits, demonstration and trialling of techniques).

The workshop will be a mix of presentations by experienced rehabilitation practitioners and visits to selected field sites. Participants will expand their skills and knowledge, challenge preconceptions, exchange ideas and expertise, work with experts and broaden networks.

Workshop fee (includes catering, field trip, Plant Conservation Techniques manual on CD & GST):

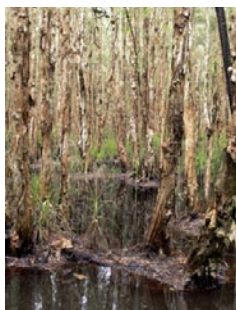
ANPC member: \$175 *Concession (ANPC member): \$85
Non-member: \$195 *Concession (non-member): \$105

* Concession for volunteer community group members, full-time students, pensioners.

Registrations close: Friday 2 March 2007

Accreditation: Participation in ANPC workshops can contribute to qualifications in the Conservation and Land Management Training Package. Cost = \$25 (incl GST). More information available on request (and on ANPC website).

This workshop is subsidised by the NSW Government through its Environmental Trust



Photographs (top to bottom): Endangered NSW north coast endemic *Acacia chrysothricha* pod and seeds; photo: Shane Ruming. Dunecare volunteers planting at Charlesworth Bay Dune Care site; photo: Jenny Mulchrone. Northern NSW coastal heath; *Corchorus cunninghamii* flower (nationally endangered); Swamp sclerophyll forest on coastal floodplain - NSW North Coast (NSW Endangered Ecological Community); photos: Shane Ruming.



Australian Network for Plant Conservation, Inc
ABN 70 861 480 818
GPO Box 1777
Canberra ACT 2601, Australia

Ph: 02 6250 9509
Fax: 02 6250 9528
Email: anpc@anpc.asn.au
Website: <http://www.anpc.asn.au>